



# Review of Stewardship Program and Objectives

Board of Directors  
October 21, 2024

# Background

- O.Reg. 687/21 required municipalities to sign bilateral agreements in order to continue stewardship programming
  - All 11 municipalities are participating
  - As of January 1, 2024, the program was extended for 5 years



# ALUS Mississippi Rideau

- Expansion from ALUS Lanark to ALUS Mississippi-Rideau
  - 31 municipalities
  - 8,500 km<sup>2</sup>
- 17 projects on 12 properties across the program boundaries
- 7 projects in MVCA's watershed
  - 3 tree plantings
  - 3 wetland creation and enhancement
  - 1 tallgrass prairie



# Ottawa Rural Clean Water Program

- 15 projects approved across the watershed
  - 9 forest management plans
  - 5 planting buffers
  - 1 precision farming project
- 3 additional projects awaiting processing and approval
  - 2 forest management plans
  - 1 erosion control
- 1 wetland project reapproved and completed



# Shoreline Naturalization and Planting

- 1,400 native trees, shrubs, and wildflowers planted through shoreline programs
  - 12 sites
- Over 700 trees and shrubs distributed through the Lake Tree Days Program
  - Kashwakamak and Sunday Lakes
- 104,000 trees planted through RVCA Private Land Forestry
  - 29 properties



# Community Engagement and Outreach

- Feedmill Creek and Poole Creek sampled through City Stream Watch Program
  - 20 volunteers over 6km
- Several outreach events attended
- 4 community engagement events held in 2024:
  - Invasive Species Action Fund – 5 volunteers removed 17 bags of invasive species from Watts Creek
  - TD Tree Days - 25 Volunteers helped plant 125 trees and shrubs along Watts Creek
  - UnSmoke – 8 volunteers removed 500 lbs. of litter at two events



# Sustainability and Next Steps

## **Funding and Partnerships:**

Continue to source funding, partnerships, and grants, including:

- Long-term funding for ongoing programming
- Short-term grants for habitat enhancements and special projects
- Partnerships with other CA's, local municipalities, lake associations, and other stewardship organizations

## **2025 Plans**

- Eight ALUS Mississippi-Rideau projects are currently being discussed for implementation
  - Expressions of Interest will continue to be accepted into 2025
- Shoreline plantings are planned at seven sites for the spring planting season
  - Site visits will continue in spring 2025 for fall plantings
- Cody Creek to be sampled through the City Stream Watch program
- Lake Tree Day partners to be confirmed over the winter

Thank you

Questions?



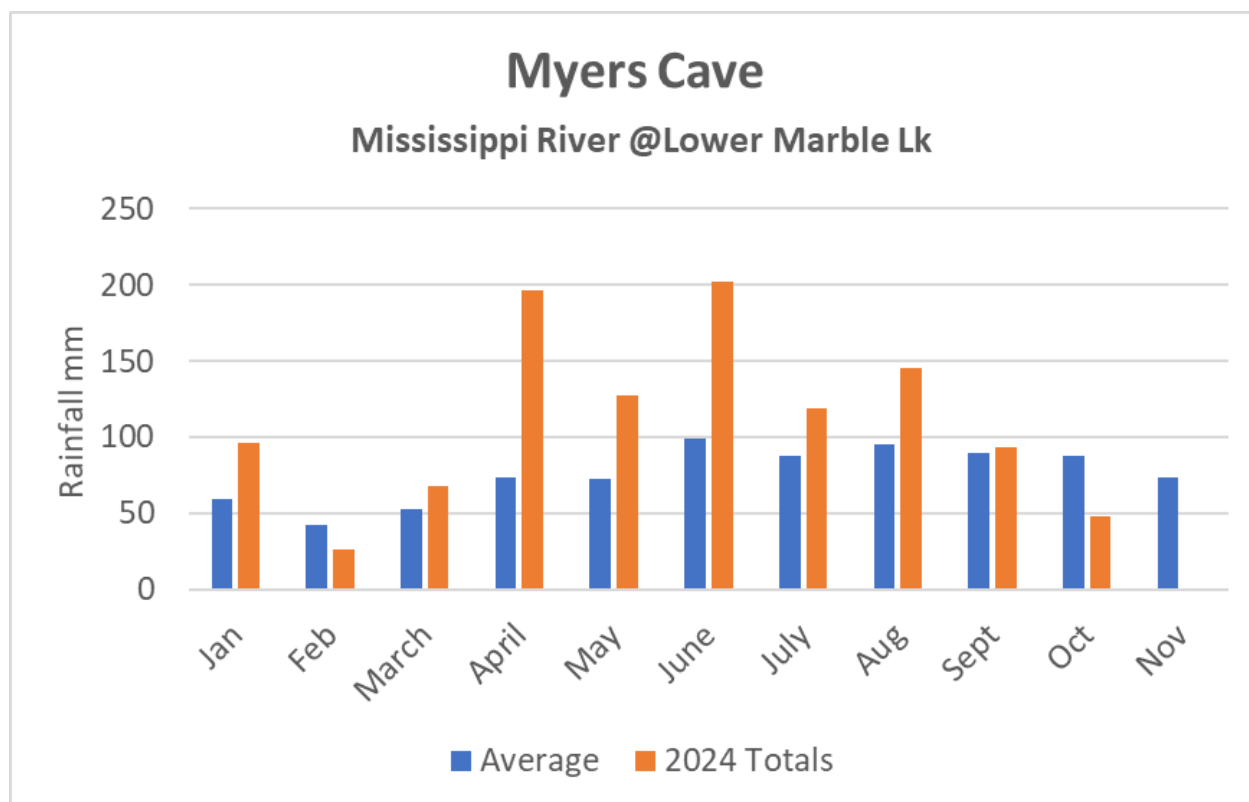


# Watershed Conditions Report

Board of Directors  
October 21, 2024

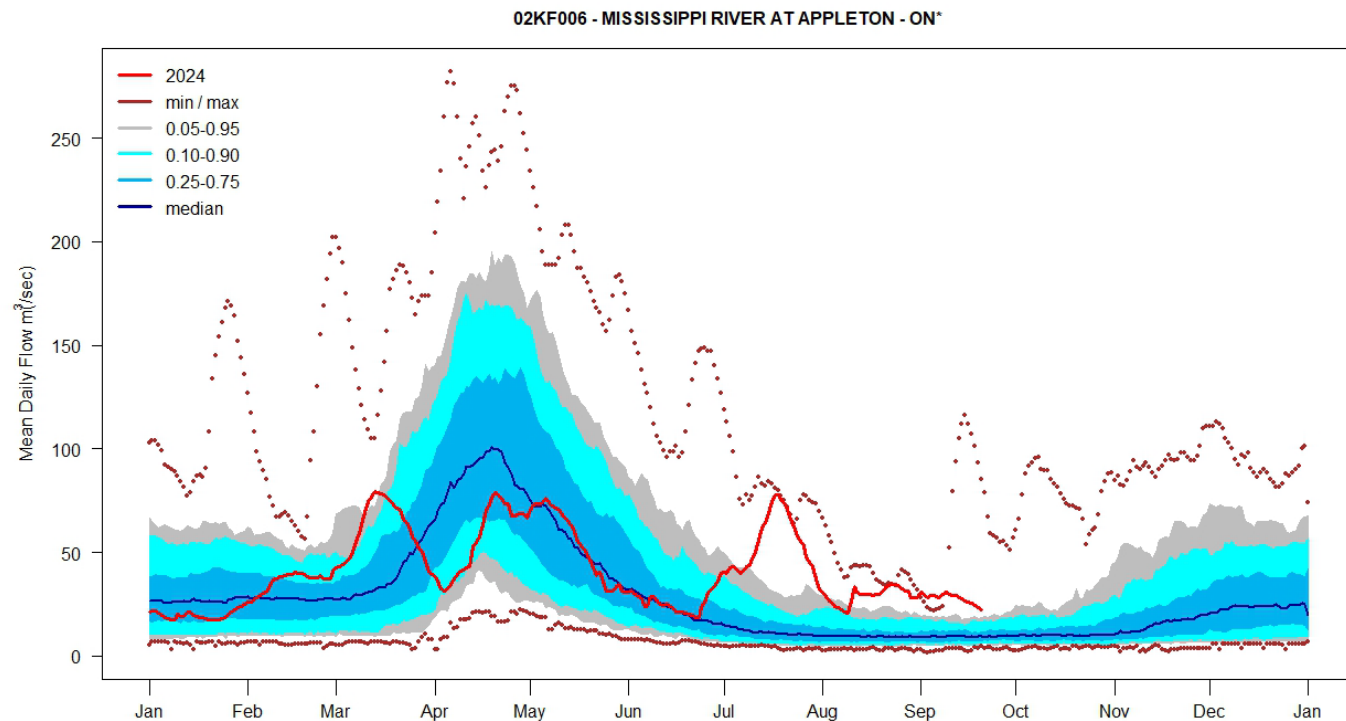
# Current Conditions

- Above average rain amounts this year.
- Storms from Hurricane Beryl hit on July 10<sup>th</sup> and Hurricane Debby on Aug 9<sup>th</sup>.
- Average yearly total is 900 mm, we are at 1120 mm for this year.

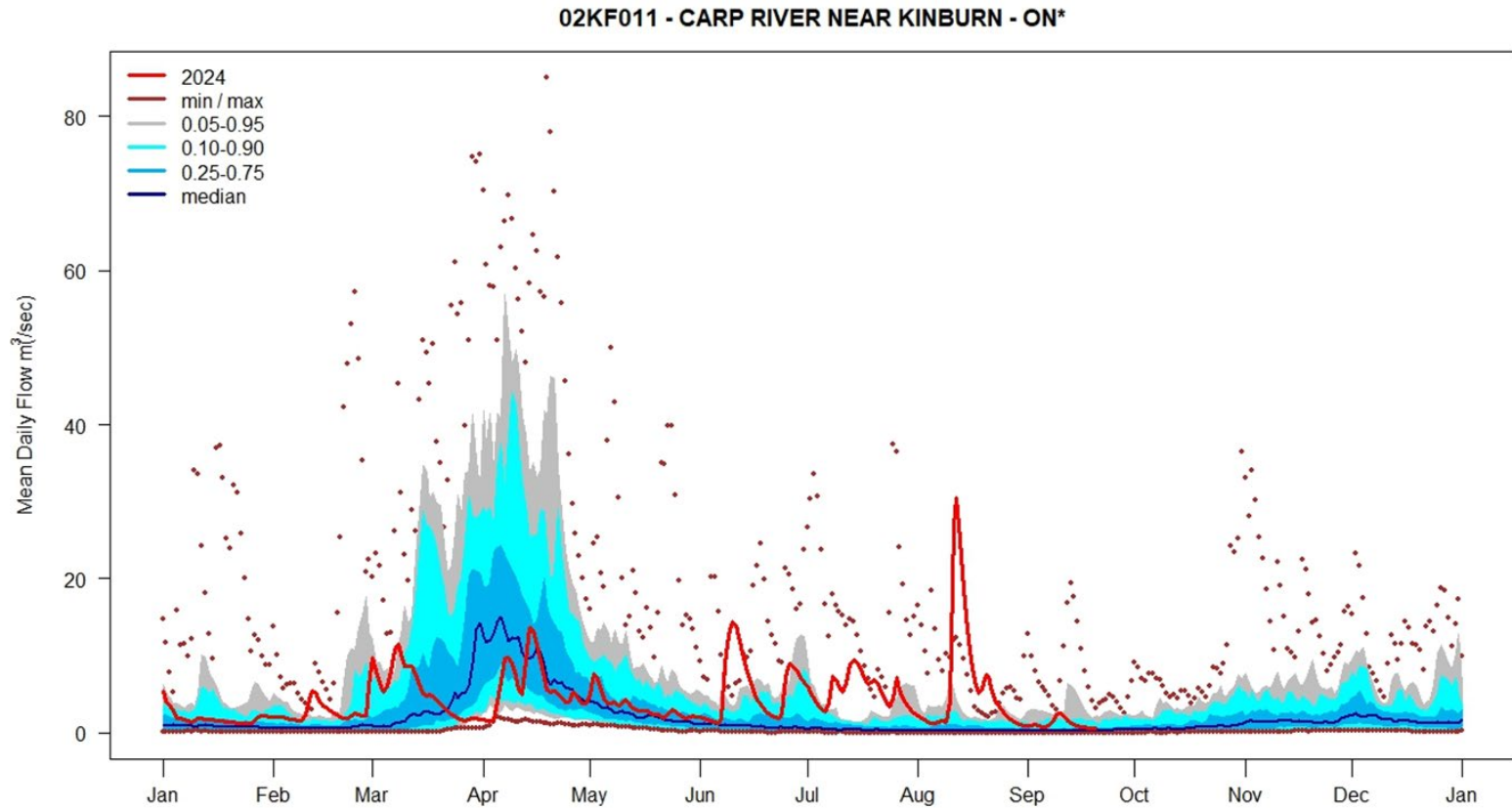


# Current Conditions

- Higher flows in summer due to rainfall.
- All dams will be operated to maintain levels within the normal operating rule curves for the structures.



# Current Conditions



# Draw down schedule

Lake / Dam	Drawdown Start Date	Drawdown End Date	Percentage Complete
Shabomeka Lake Dam	Mid September	Early October	80%
Pine Lake dam	Mid September	Late September	100%
Mississippi Lake/Carleton Place dam	Mid September	Early October	0%
Kashwakamak Lake dam	After Thanksgiving weekend (Mid Oct)	Early December	30%
Mississagagon Lake dam	After Thanksgiving weekend (Mid Oct)	Mid October	30%
Big Gull Lake dam	After Thanksgiving weekend (Mid Oct)	Mid November	40%
Summit Lake dam	After Thanksgiving weekend (Mid Oct)	Mid October	0%
Widow Lake dam	After Thanksgiving weekend (Mid Oct)	Mid October	0%
Mazinaw Lake dam	After Hunting season (Mid Nov)	Mid December	0%

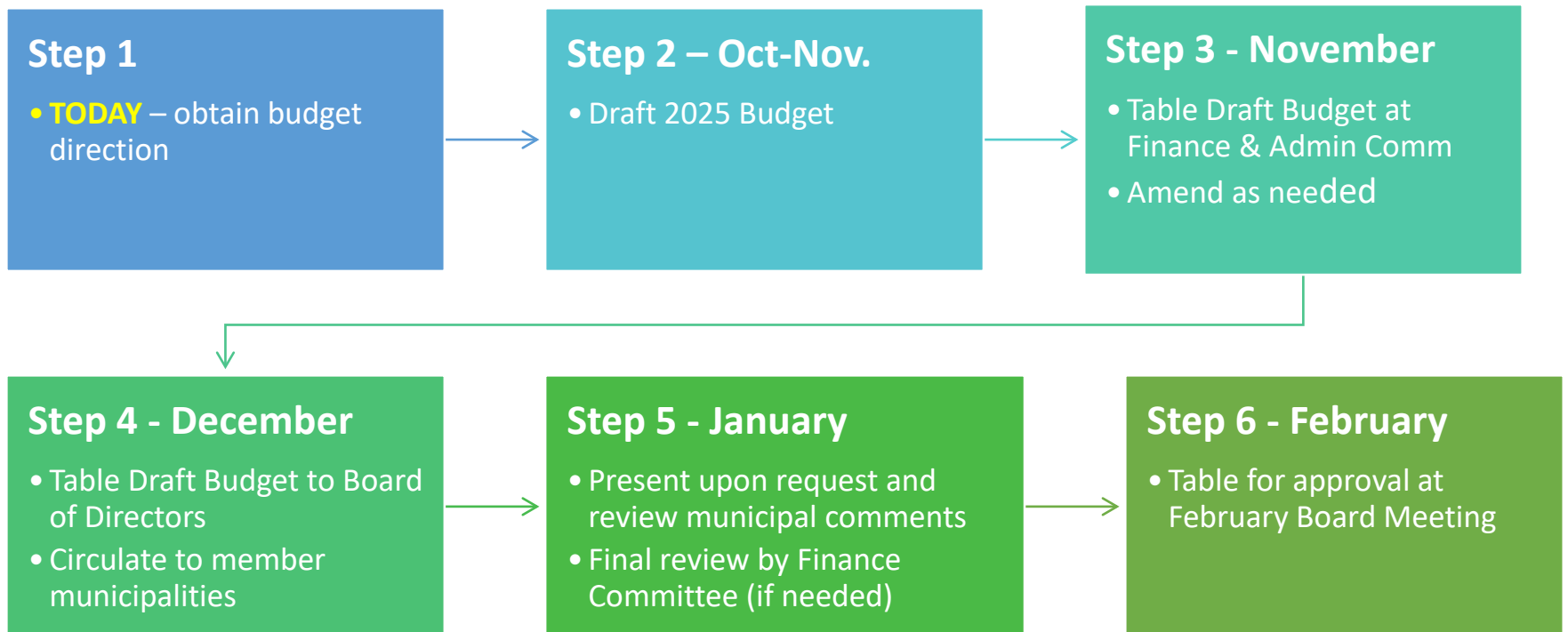


# 2025 Budget Approach & Assumptions

Board of Directors

October 21, 2024

# Budget Process



# General Approach

1. Follow direction of City of Ottawa in setting budget assumptions for increases to:
  1. Tax revenues from growth
  2. Operating budget
2. Implement schedule of Capital Levy Increases approved by the Board in 2023.
3. Compensation budget increase based on Statistics Canada Cost of Living (COL) August rate



# Workforce Plan Adjustment

## Carry-over from 2021 *minus* cost savings:

Outstanding Compensation on Operating Reserve, 2024	\$219,327
<b>Savings</b> of 1.0 FTE including benefits in 2025	(\$105,000)
Implement 2025 <b>Job Evaluation</b> Recommendations	<b>\$15,000</b>
Net Pressure 2025	\$129,327
<b>Recommendation:</b> <b>50%/50%</b> Municipal Levy/ Op. Reserve	<b>\$64,664</b>

# Recommended Assumptions

1. An assumed assessment growth rate of 1.5%
2. Operating: 2.9% plus assessment growth
3. Capital: 8.5% plus assessment growth
4. A cost of living increase to the 2025 Payscale of 2.0%; and
5. Transfer \$64,664 onto the Municipal Levy for *Workforce Plan* adjustments (2%)

# Impact by Municipality

Including changes in assessment allocation.

	Operating Levy incr.	Capital Levy incr.	Total Increase	2024 % Assessment	2025 % Assessment
Addington Highlands, Township of	\$311	\$106	\$418	.1551%	.1535%
Beckwith Township	\$1,417	\$483	\$1,901	.6921%	.6987%
Carleton Place, Town of	\$5,666	\$1,932	\$7,598	2.6708%	2.7932%
Central Frontenac, Township of	\$869	\$296	\$1,165	.4303%	.4284%
Drummond/North Elmsley, Twp. of	\$983	\$335	\$1,319	.4870%	.4849%
Greater Madawaska, Township of	\$71	\$24	\$96	.035%	.0352%
Lanark Highlands, Township of	\$2,244	\$765	\$3,010	1.108%	1.1065%
Mississippi Mills, Municipality of	\$5,691	\$1,941	\$7,632	2.783%	2.8059%
North Frontenac, Township of	\$1,825	\$622	\$2,447	.9115%	.8997%
Ottawa, City of	\$182,500	\$62,240	\$244,740	90.103%	89.9756%
Tay Valley Township	\$1,254	\$428	\$1,682	.6225%	.6183%
<b>TOTAL</b>	<b>\$202,833</b>	<b>\$69,174</b>	<b>\$272,007</b>	<b>100%</b>	<b>100%</b>

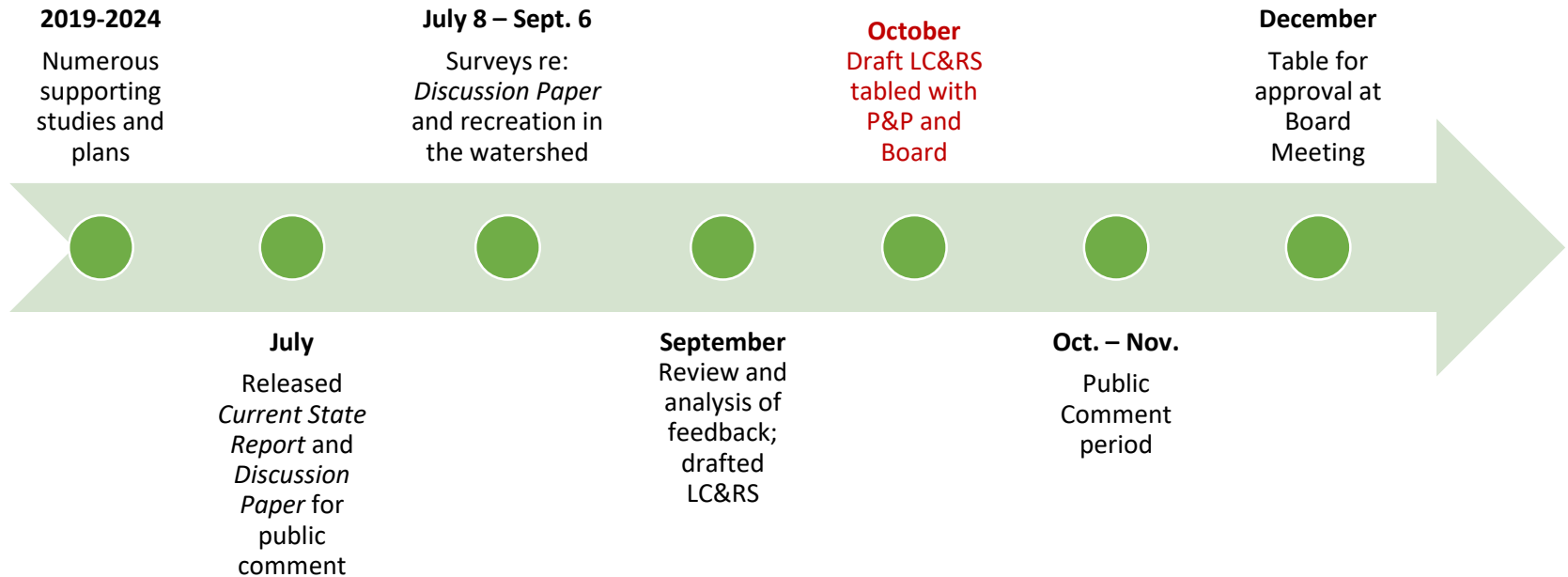


# Land Conservation & Resource Strategy

Board of Directors

October 21, 2024

# Land Conservation & Resource Strategy Process



# Mandatory Elements

**Conservation Area Strategy** must have policies that address:

- the “**acquisition**” and disposition of CA lands
- the programs and services offered on those lands
- how CA lands “**augment any natural heritage** in its jurisdiction”, and
- how they “**integrate with other** provincially or municipally-owned lands”

**Watershed-based Resource Management Strategy** must contain:

- Guiding principles
- Objectives
- List of studies, monitoring and other information used
- Compliance review of existing programs and services
- Risk analysis and mitigation plan
- List of services with cost estimates

Per *O.Reg. 686/21* **acquisition** means:

“owned or controlled by the authority, including any interests in land registered on title” and may include license and lease agreements

# Public Consultation

- Widespread promotion and notifications
- Virtual Information Session
- Presentation to municipalities
- Presentation to interested groups
- Two surveys:

## ***Discussion Paper Survey***

*Focus:* natural heritage land, facilities, uses, museum, portages, dams.

- 84 responses/ submissions
- Mainly from Mississippi Mills, Ottawa\*, and North Frontenac

## **Recreation Facility Survey**

*Focus:* walking and hiking trails, boat launches, tent camping.

- 198 responses
- Mainly from Mississippi Mills, Carleton Place and Beckwith
- 47% born between 1946-1964

# Features people value at their top sites

1. Drive from home less than 30 minutes
2. Easy parking access
3. Quiet/seclusion/privacy
4. Variety of trail routes and distances
5. Trails with challenging terrain
6. Presence of water features
7. Wildlife viewing opportunities
8. One or more vistas/look-outs
9. Dogs on leash permitted on the trails



# Programs & Services

Cat. 1



## Hazard Management

Flood Forecasting & Warning  
Mapping & Regulations  
Assets & Operations

Cat. 1



## Land & Resource Conservation

General  
Conservation Areas  
Conservation Preserves  
WECI Infrastructure  
Administrative Land

Cat. 1 & 2



## Source Water Protection & Monitoring

Cat. 1 & 3



## Other Services

Education & Outreach  
Stewardship  
Visitor Services

# Hazard Mgt: Flood Forecasting & Warning

## Goal

1. Watershed users receive timely and accurate information and warnings regarding watershed conditions and how to protect themselves and their property.

## Objectives

2. The gauge network is reliable and provides accurate real-time data regarding conditions at key locations across MVCA's jurisdiction.
3. Data meets industry quality standards, allows for short and long-term analysis, and is easy to access, use, and share.
4. Watershed models allow for reliable predictive analysis and optimal system operation.
5. Municipalities receive quality drought response coordination and emergency planning support.
6. Local communities understand how their watershed functions, systemic risks, how they can be mitigated, and how to prepare for and respond to natural hazards including drought.
7. Queries are responded to in accordance with MVCA's Customer Service policy.

# Hazard Mgt: Mapping & Regulations

## Goals

1. Development does not occur in regulated areas unless properly assessed and permitted.
2. MVCA is considered to be a fair and responsive regulator.

## Objectives

3. Regulatory maps are prepared in accordance with provincial requirements and updated in response to development pressures, changes in regulations, land use and the impacts of climate change.
4. Regulatory maps are updated annually and published on MVCA's website.
5. Historical data is readily available to support discussions with applicants and decision-making.
6. Site specific information and permits are used to adjust regulatory mapping where warranted.
7. The review of planning and permit applications consistently meet regulated timelines and industry standards.
8. Policy guidelines are kept current to address regulatory changes, and evolving watershed conditions and industry practices.
9. Queries are responded to in accordance with MVCA's Customer Service policy.
10. Complaints and reports of infractions are managed in a fair and transparent manner.
11. Compliance promotion and enforcement activities are timely, effective, and affordable.

# Hazard Mgt: **Assets & Operations**

## **Goals**

1. Water management activities consistently mitigate the impacts of natural hazards.
2. MVCA is a trusted asset manager and operator of the Mississippi River system.

## **Objectives**

3. Water management assets are operated and maintained in accordance with provincial and federal regulations, the Mississippi River Water Management Plan, and MVCA's Asset Management Plan and Operations, Maintenance & Surveillance (OMS) manuals.
4. The 10-year Capital Plan, municipal levies, and upper-tier government grants allow for timely development, renewal and replacement of water management assets, and the development and update of watershed models.
5. Asset renewal considers the impacts of development, climate change, environmental, social and financial impacts, and the historical rights and the current and future needs of First Nations and others.
6. MNR and OPG view MVCA as the operator of choice for their assets within the Mississippi River watershed.

# Land & Res. Mgt: General

## Goals

1. The natural resources of the Mississippi, Carp, and Ottawa river watersheds are managed sustainably for the enjoyment and welfare of current and future generations.
2. Land ownership and management are used as tools for reconciliation with First Nations.

## Objectives

3. MVCA's *Land Inventory* is current and meets regulatory requirements.
4. MVCA's land holdings meet the evolving mandate and needs of the organization.
5. MVCA has free and clear title or legal agreements for all properties owned or used by the Authority for the delivery of programs and services.
6. Every property owned by or under agreement with MVCA has a board-approved plan.
7. The influence and participation of First Nations is evident at all MVCA properties.

# Land & Res. Mgt: Conservation Areas

## **Goals**

1. Conservation areas provide opportunities for walking, hiking, and solitude in a natural setting and contribute to the quality of life and sustainability of the watershed.
2. Conservation areas are accessible to all.

## Objectives

3. MVCA conservation areas:
  - a) are large natural spaces with walking/hiking trails of varying length and difficulty that allow for **at least 1-hour's passive** recreation.
  - b) are attractive, affordable and safe.
  - c) provide parking, comfort stations, rest spots/shelters, and waste facilities.
  - d) provide **at least one wheelchair accessible trail and comfort station**.
  - e) provide excellent directional and interpretive signage that includes local cultural, Indigenous, and scientific information.
  - f) **reserve at least 90% of the property** as a natural area.
4. A conservation area-type park is available within a 30-minute drive of all watershed residents.
5. There is 15 ha of conservation area-type parkland for every 1,000 residents in the watershed.
6. Other conservation trails:
  - a) Walking/hiking trails on conservation lands within the watershed are maintained to a high standard.
  - b) MVCA optimizes use of know how and equipment by supporting municipal, county, and conservation organizations for the maintenance of walking/hiking trails in the watershed.

# Land & Res. Mgt: Cons. Preserves

## Goals

1. Eliminate risk of future losses in areas at high risk of natural hazards.
2. No net loss of ecological and hydrological services in the watershed.

## Objectives

1. MVCA conservation preserves:
  - a) Sterilize undevelopable land to mitigate future flood and erosion damage and losses; or
  - b) Manage an area of natural heritage value on behalf of a third-party; or
  - c) Mitigate the impacts of land development elsewhere in the watershed; or
  - d) Protect or develop natural carbon sinks using GHG-reduction funding mechanisms.



# Land & Res. Mgt: WECl sites

## Objectives

1. Water and Erosion Control Infrastructure (WECl) lands allow for:
  - a) The construction, maintenance, operation, and renewal of water and erosion control structures such as dams and weirs and include parking and materials storage.
  - b) The installation and maintenance of booms, fencing, signage and other safety measures.
  - c) Safe passage around a structure, which may include a portage route.
  - d) The installation and maintenance of monitoring and communication devices to support weather, soil, snow and ice, and riverine system monitoring and remote data access.
  - e) Unfettered legal access to all the above.

# Source Water Protection & Monitoring

## **Goals**

1. MVCA demonstrates value for money in delivering system monitoring and resource management services to the province and municipalities.

## **Objectives**

2. Samples are collected, handled, and shipped in accordance with required procedures.
3. Provincial monitoring activities are leveraged to support local municipal monitoring objectives.
4. Provincial resource management work is leveraged to support local municipal watershed management objectives.
5. The Board of Directors understands its separate and distinct role as a Source Protection Authority.

# Other: Education & Outreach

## Goals

1. Watershed residents and users:
  - a) understand how the watershed functions and **their role and MVCA's role** in it.
  - b) make informed decisions that mitigate risks and support resource sustainability.
2. MVCA is a partner of choice for education and community engagement.

## Objectives

3. Locally relevant, useful, and accessible by all.
4. Targeted by audience and location.
5. Engaging, hands-on, and fun.

# Other: Stewardship

## **Goals**

1. The protection of water quality, wetland cover, forest cover, and other environmental features by working with watershed landowners to make meaningful improvements to their properties and practices.

## **Objectives**

2. Shoreline habitat enhancement
3. Stream and river restoration
4. Wetland protection and recovery
5. Enhanced forest management
6. Increased public knowledge of land management practices for watershed health
7. Community engagement in ecosystem monitoring and reporting
8. Invasive species identification and removal

# Other: Visitor Services (MOK)

## **Goals**

1. Sustainable management of the property and buildings for current and future generations.
2. A top-10 destination in Lanark County.

## **Objectives**

3. Increase all-season level of service, including education, cultural appreciation, and both guided and self-guided outdoor recreation opportunities, for local residents and visitors to the region.
4. Encourage the appreciation of local cultural history through programming and activities.
5. Broaden the sources and amounts of revenue from activities that complement the primary functions of the site to financially support core programs.
6. Strengthen relationships with the community at large.



# Education Program Review

Scott Lawryk, Property Manager

October 21, 2024

# Process

- Board directed staff to conduct analysis before reinstating the program
- Bill Elgie was contracted to develop a comprehensive report
  - Report included:
    - Interviewing other CA's on their programs
    - Past participants
    - School Board contacts
    - Teachers (through a survey)
    - Other outdoor Ed centres/programs in the area
    - A review of MVCA properties/facilities
    - List of potential partners
- Short-term, mid-term, long-term recommendations

## Results / Recommendations

- Short term (2025)
  - Offering programs during May and June
  - Extension of the Summer Day Camp to 7-weeks
- Mid-and long-term are based around program growth and development



# 2025 Program Plan

- School Programming (both fieldtrips and in-class visits)
- Guided Tours of our three flagship Conservation Areas
- PA Day Camps
- March Break Day Camp
- 7-Week Summer Day Camp

# 2025 Targets

2025 EDUCATION PROGRAM BUDGET SUMMARY	
<b>EXPENDITURES</b>	
1 FTE Wages & Benefits	58,650.00
Support Staff Wages	34,620.00
Program Expenses	13,225.00
Administrative	2,680.00
Special Guest/ External Contractor	1,700.00
Marketing and Publicity	5,270.00
<b>TOTAL EXPENSE</b>	<b>116,145.00</b>
<b>REVENUES</b>	
Program 1 - School Programs	4,840.00
Program 2 - Guided Tours	2,440.00
Program 3 - PA Day Camps	5,400.00
Program 4 - March Break Camp	5,625.00
Program 5 - Summer Camp	77,880.00
Grant Funding or Sponsorship	1,000.00
Cat 3 Programs and Services Agreement	20,000.00
<b>TOTAL REVENUE</b>	<b>117,185.00</b>
<b>NET</b>	<b>1,040.00</b>

- One FTE position
- Based on realistic obtainable goals
  - 37 school trips in 2019 vs. goal of 12
  - 15-20 in school visits vs. target of 8
- Focus on program quality
- Summer Day Camp
  - 20 kids for 6-weeks in 2019
  - 32 kids for 4-weeks in 2024
  - 44 kids for 7-weeks in 2025
- Summer Camp 100% cost recoverable, and supports 67% of gross program costs.

# Questions / Comments

---





# Asset Management Plan

Board of Directors

October 21, 2024

# AMP Goals and Objectives

- **Goals:**


1. Ensure business continuity and public safety.
2. Establish service levels and performance expectations.
3. Optimize investments in assets for the short and long-term.
4. Provide transparency in asset management.

- **Objectives:**

1. Assets are inventoried, monitored, and actively managed throughout their lifecycle.
2. Assets are operated and maintained in accordance with agreed upon service levels.
3. Tracking and analysis of asset history are leveraged for continuous improvement.
4. Asset additions, betterments, and disposals are transparent and affordable.
5. Funding is available when needed to maintain business continuity and public safety.
6. Long-term asset investments take into consideration evolving conditions (e.g. regulatory, climatic, technological) and the long-term consequences of decisions being taken.

# AMP TOC

- **Chapter 1: MVCA**
- **Chapter 2: Asset Management Planning**
  - Goals & Objectives
  - Tangible Capital Assets & Asset Classes
  - Asset Registers
  - Inspection and Condition of Infrastructure
  - Asset Planning & Renewal
  - Funding



Applies to all  
MVCA Tangible  
Capital Assets

# AMP TOC

- **Chapter 3: Water Control Structures**

- Asset Inventory
- System Operation
  - General principles & objectives
- System Management
  - Guidelines and documentation
- Levels of Service
  - Category definition
  - Asset classification
  - Expected service

- **Chapter 4: Future Considerations**

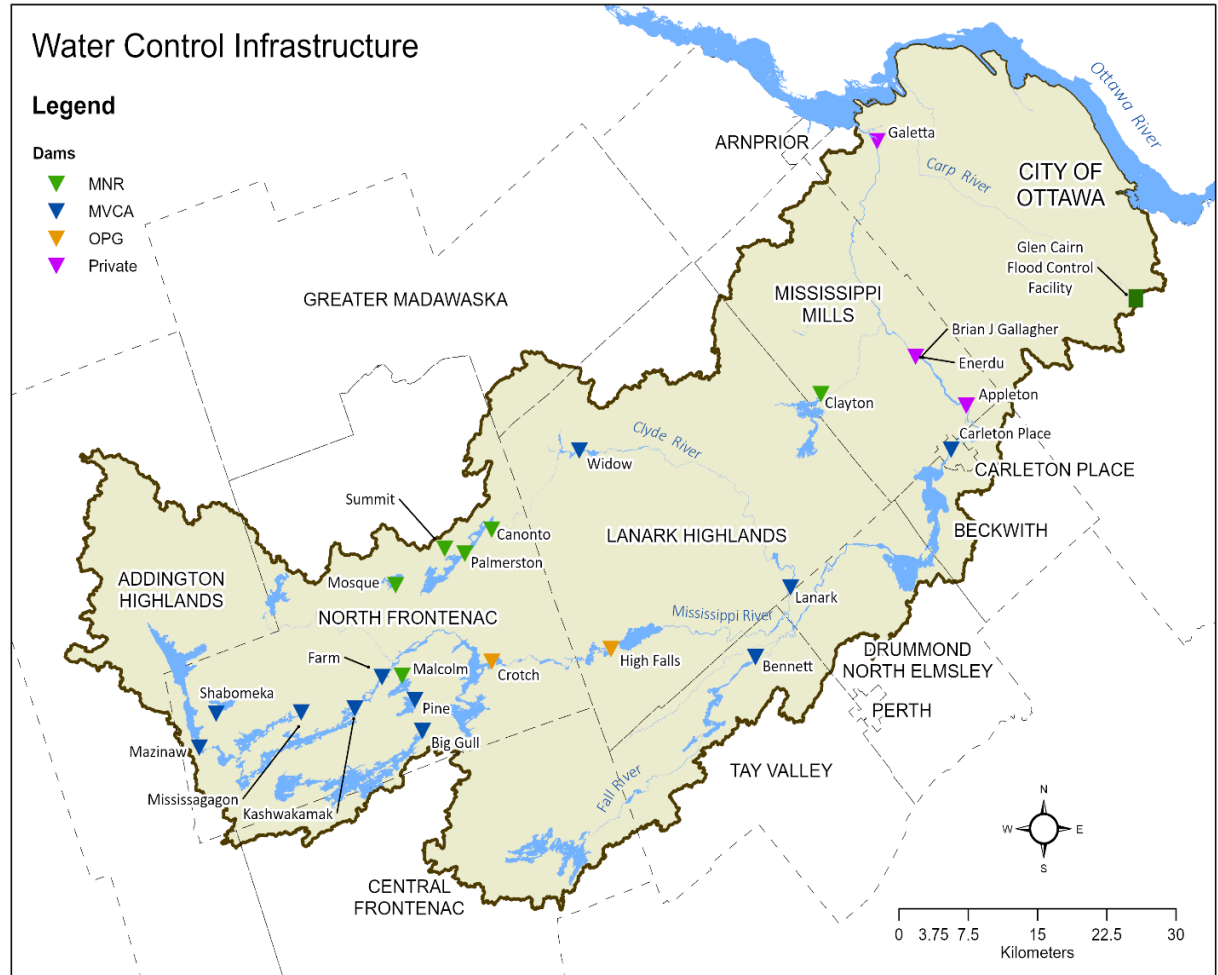


Specific to  
Water Control  
Structures

# WECI Inventory

24 water control structures within MVCA:

- 12 owned and operated by MVCA
- 8 owned by others but operated by MVCA
- 4 owned and operated by others
- 12 included in MRWMP (6 owned by MVCA)





# WECI Inventory

## CONDITION



< Mazinaw Lake Dam

vs.

Kashwakamak Lake Dam >



## VALUE



< Pine Lake Dam

vs.

Carleton Place Dam >



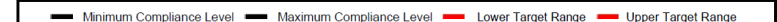
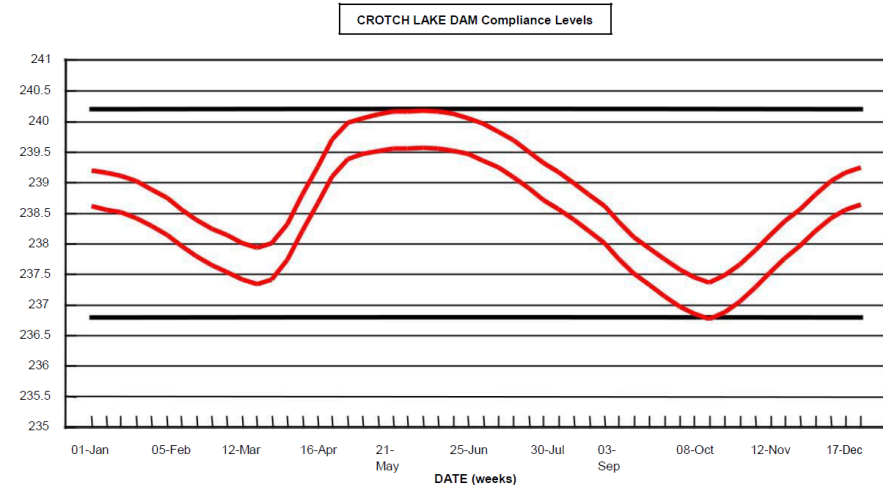
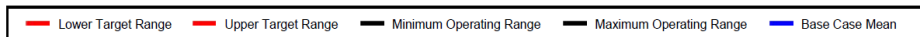
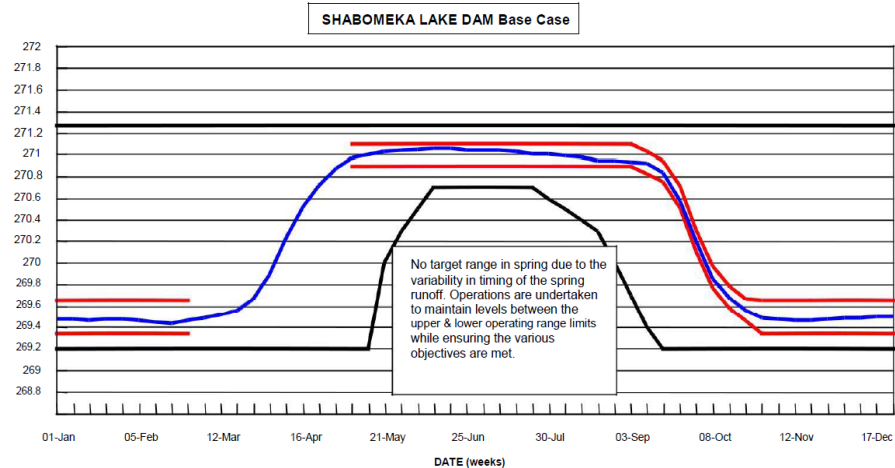
# System Operation

## MRWMP Objectives:

- Maintain or Improve aquatic ecosystem health throughout the System.
- Address public safety and minimize property damage.
- Maintain water levels throughout the system for navigation, recreation, cultural and social opportunities.
- Recognize power generation values from the system.
- Develop public awareness on current conditions

## O. Reg. 686/21 Objectives:

- Protect against or mitigate risks associated with flood and erosion hazards, ice management, and low water/drought condition



# System Management



Technical Bulletin:

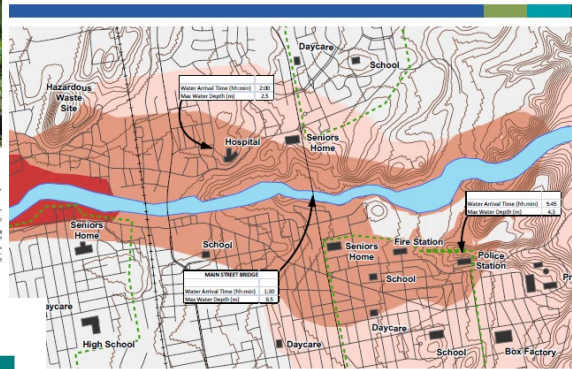
## Dam Safety Reviews



Administrative Guide



Canadian Dam Association  
Association canadienne des barrages



Technical Bulletin

## ALTERATIONS, IMPROVEMENTS AND REPAIRS TO EXISTING DAMS



Ministry of Natural Resources and Forestry  
2016

## LAKES AND RIVERS IMPROVEMENT ACT



Ministry of Natural Resources and Forestry  
2017

## Technical Bulletin: Emergency Management for Dam Safety



## Technical Bulletin: Dam Design And Construction Considerations 2023



# Levels of Service

## Criteria:

1. Presence of a reservoir
2. Dam operation
3. HPC
4. Flood prone areas

Level of Service	Criteria Description
A	<ul style="list-style-type: none"><li>• All operable dams with a reservoir directly upstream that are considered “important” for flood control.</li><li>• If defined, dams with an HPC of Very High or High.</li><li>• All dams near a flood-prone area.</li></ul>
B	<ul style="list-style-type: none"><li>• All operable dams with a reservoir directly upstream that are considered “support” for flood control.</li><li>• If defined, dams with an HPC of Moderate.</li></ul>
C	<ul style="list-style-type: none"><li>• Inoperable structures (i.e. weirs), operable structures that do not have a reservoir directly upstream, or small operable structures.</li><li>• If defined, dams with an HPC of Low.</li></ul>

# Levels of Service

Water Control Structure	Is there a reservoir?	Is the structure operable?	Near flood-prone area?	HPC	Category
Bennett Lake Dam	Yes - Support	Yes	No	None	B
Big Gull Lake Dam	Yes – Important	Yes	No	Low	B
Carleton Place Dam	Yes – Important	Yes	Yes – Innisville, Mississippi Lake, Town of Carleton Place	Low	A
Farm Lake Dam	No	No	No	None	C
Kashwakamak Lake Dam	Yes – Important	Yes	No	High	A
Lanark Dam	No	Yes	Yes – Lanark Village, Cedardale	None	A
Mazinaw Lake Dam	Yes – Important	Yes	Yes – Little Marble/Marble Lake	Low	A
Mississagagon Lake Dam	Yes – Important	Yes	No	None	B
Pine Lake Dam	Yes – Support	Yes	No	None	C
Shabomeka Lake Dam	Yes – Important	Yes	No	Low	B
Widow Lake Dam	Yes – Support	Yes	Yes – Lanark Village, Cedardale	None	B

# Levels of Service

Service Level	Category A	Category B	Category C	How is this tracked?
<b>Emergency Preparedness &amp; Response Plan</b>	Update annually or as deemed practical.			Date of most recent revision tracked in EPRP.
<b>Public Safety Plan</b>	Update periodically or following any major changes occurring at the site that are likely to affect public safety.			Date of most recent revision tracked in PSP.
<b>Inspections</b>	Visual inspections are completed when operating a dam. Engineering inspections are completed annually.			Inspection form completed at each inspection and filed.
<b>Operations</b>	Operated on an as-needed basis.		Not operational, or on an as-needed basis.	Operations and visual inspection form <u>is</u> completed and saved to WISKI.
<b>Leakage</b>	Tarps may be installed in certain circumstances (i.e. low water or drought conditions).	Tarps may be installed in certain circumstances (i.e. low water or drought conditions).	Unless severe, leakage is not a concern.	Inspection form completed at each inspection and filed.
<b>Complaints</b>	Complaints will be investigated at the next scheduled inspection.			Tracked in spreadsheet form and filed.
<b>Minor/Routine Maintenance</b>	Painting, grass mowing, lubrication and similar completed on an annual basis.			Operations Department Work Plan and Schedule
<b>Dam Safety Reviews</b>	Recommended every 10 years	HPC should be reviewed every 10 years to determine whether a change in HPC is warranted. If the HPC rating increases, a DSR will be required at that time.	HPC should be reviewed every 10 years to determine whether a change in HPC is warranted. If the HPC rating increases, a DSR will be required at that time.	Capital Planning
<b>OMS Manuals</b>	Update on an as-needed basis or if a DSR deems it necessary.			Filed

# Plan Implementation

- Deficiencies and requirements
- Several years to fully implement
- Priorities → corporate needs assessment
- Periodic reviews (every 5 years):
  - MVCA mandate
  - MVCA funding mechanisms
  - Regulations & policies
  - Watershed changes

