



Board Meeting

Board of Directors

March 11, 2024



MVCA Planning Advisory Services

Board of Directors

March 11, 2024

Program Objectives

- Protect people, public interest and property from natural hazards
- Do not aggravate a natural hazard or impact wetlands
- Work with municipalities and landowners



MVCA Role in Planning

- Water resource planning & management best managed at watershed & subwatershed level

- Review planning applications for conformity with the Provincial Policy Statement and Provincial guidelines as they relate to Natural Hazards & SW Quantity

- Make recommendations to mitigate impacts & advise on regulatory role

Partnerships with Municipalities

- Assist municipalities in meeting their obligations under the *Provincial Policy Statement, 2020*
- Promote sustainable economic development by conserving and protecting the resources that draw people to the region



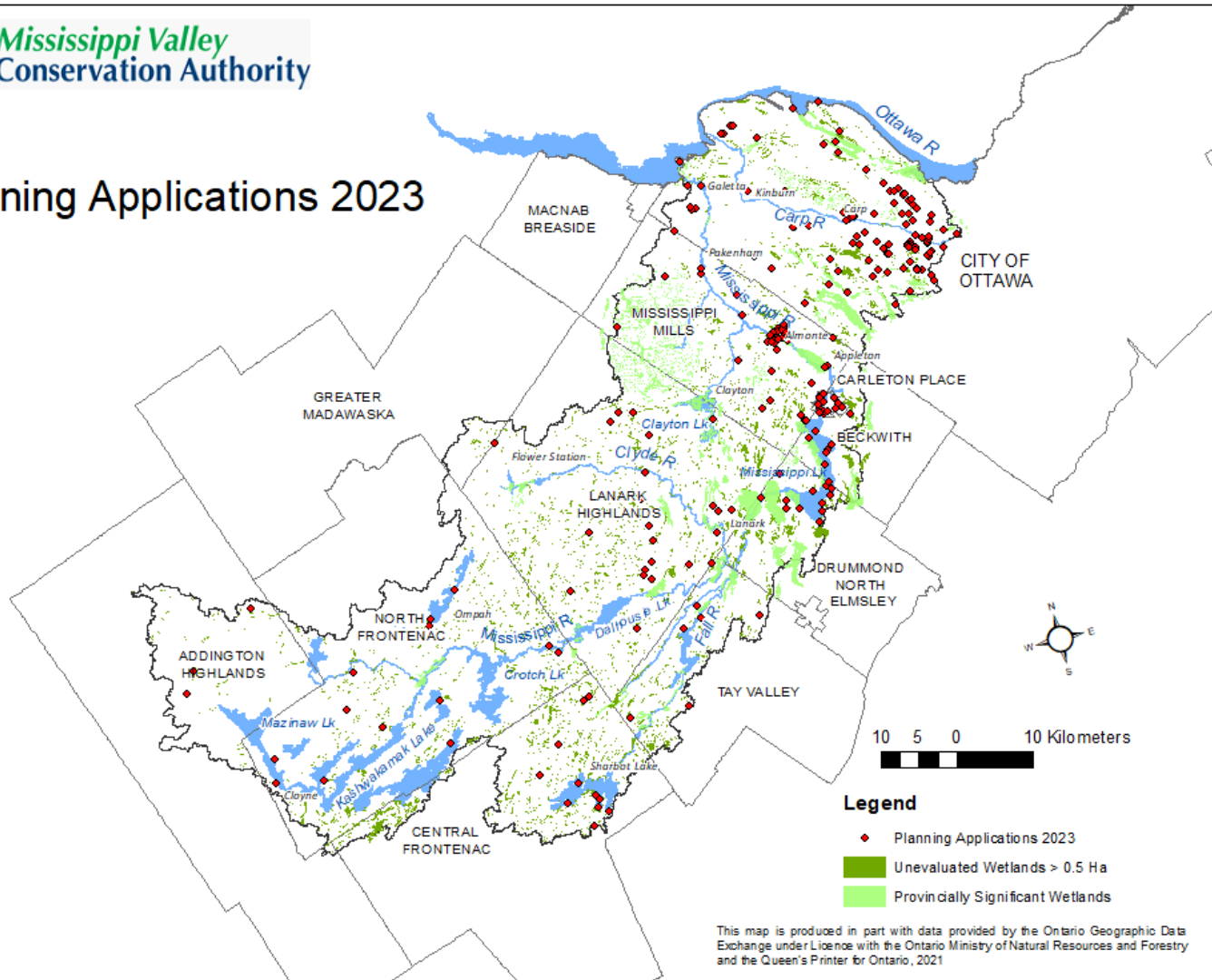
2023 Planning Applications

	SEV	ZBA	MV	SP	DPA	OPA	SUB/ CONDO	OTHER	TOTAL
Addington Highlands	1		1					1	3
Beckwith	7	6	2	6					21
Carleton Place	7				6	1	4	1	19
Central Frontenac	10	1	6						17
Drummond/ North Elmsey	11	1	7					1	20
Lanark Highlands	24	5	1			3		1	34
Mississippi Mills	18	11	21	2			4	1	57
North Frontenac	12	2	13						27
Ottawa	42	15	13	9			4	5	88
Tay Valley	12		1	1					14
TOTAL	144	41	65	18	6	4	12	10	300

2023 Planning Applications

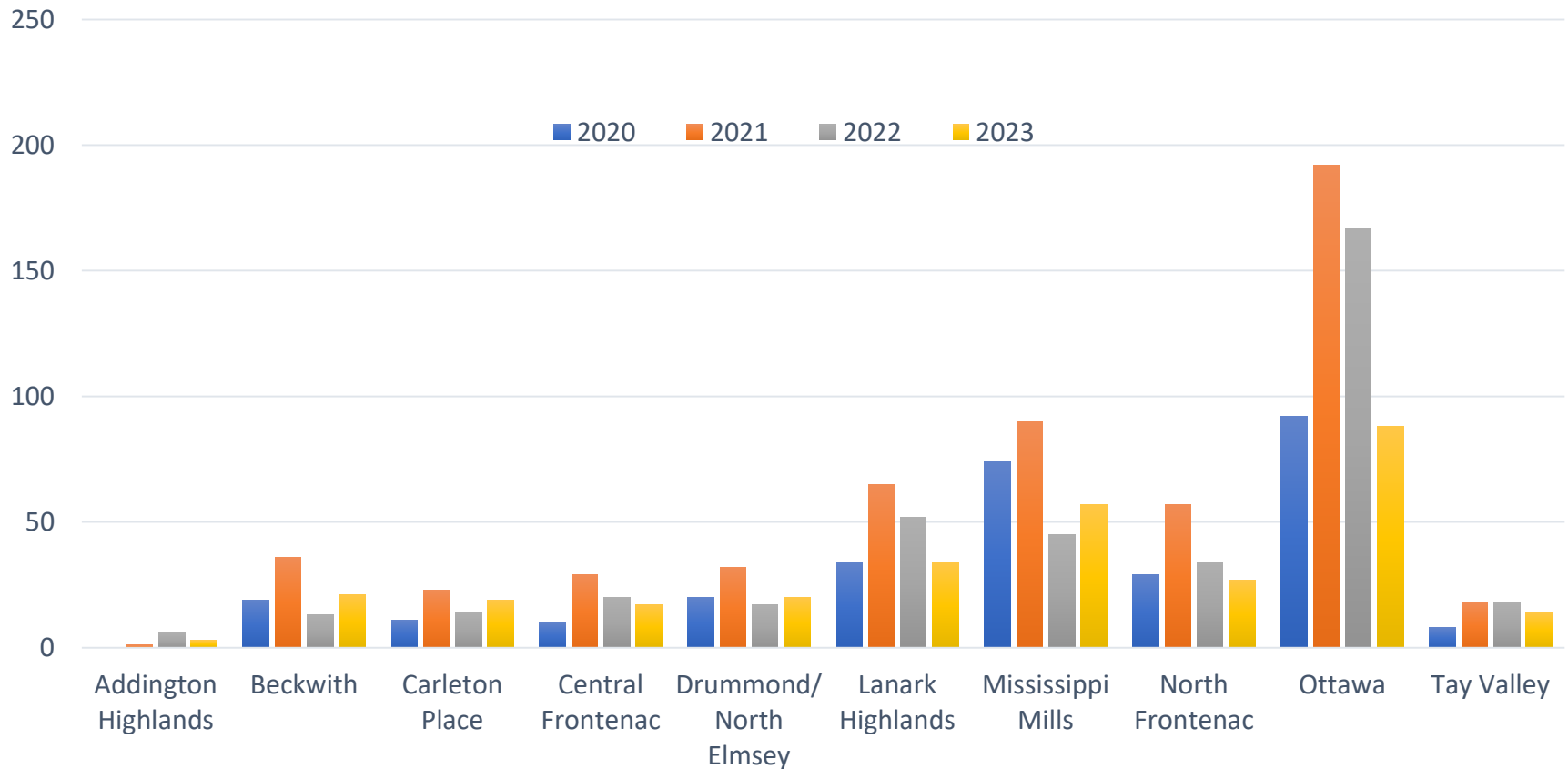


Planning Applications 2023

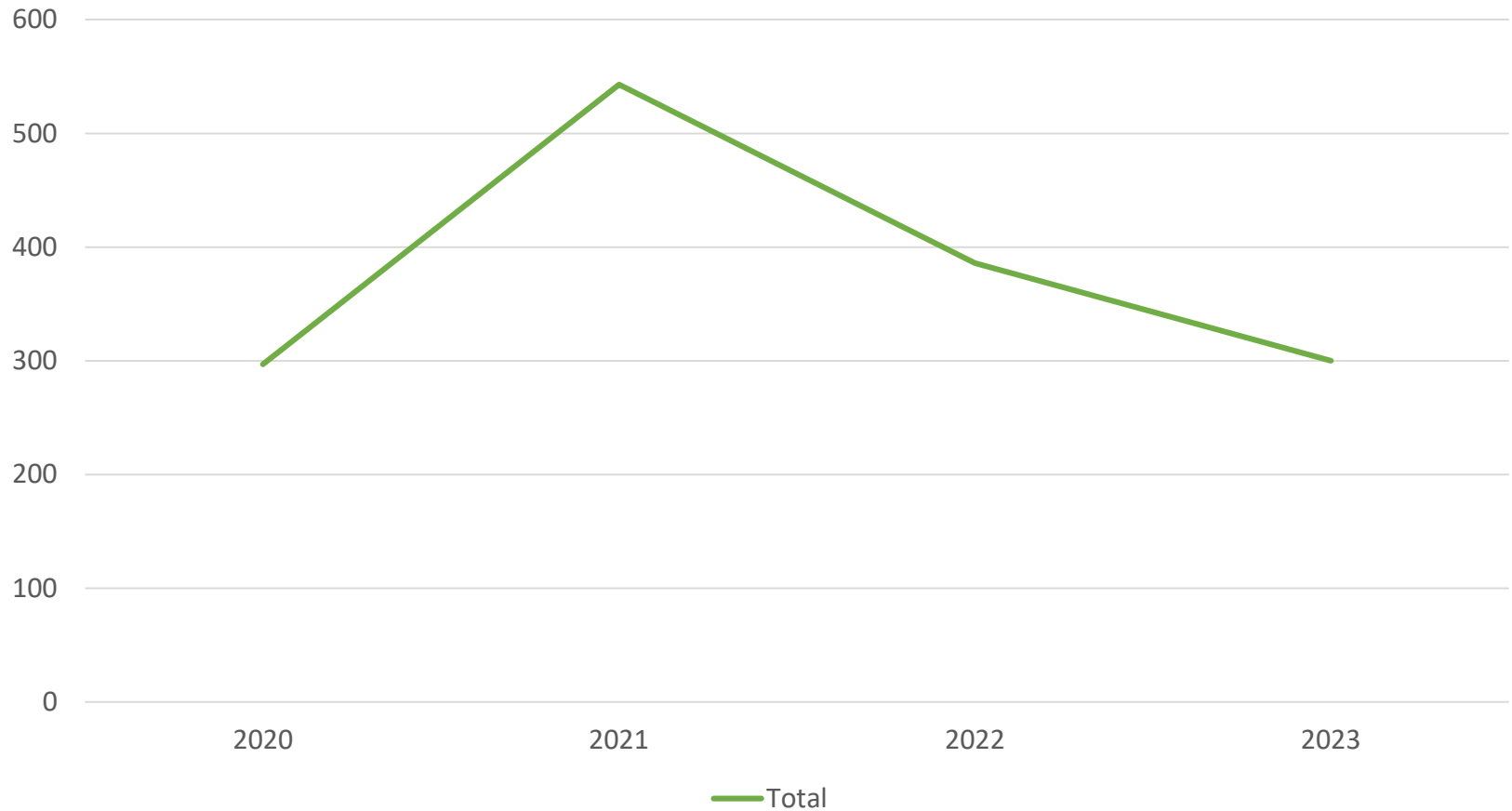


Planning Applications – Comparison by Year & Municipality

Comparison of Last 4 Years



Planning Applications – Comparison by Year



2023 Things to Note

Provincial changes – Bill 109 and Bill 23

- No longer advise municipality on Natural Heritage
- SW reduced to quantity only
- Assisted municipalities in transition
- Timelines are increasingly important
- Emphasis on Pre-consultation (City of Ottawa – 25)
- Tailoring letters to reflect changes

2023 Inquiries:

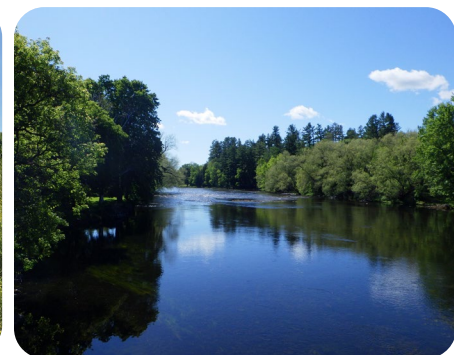
- 456

Complex/Challenging Reviews

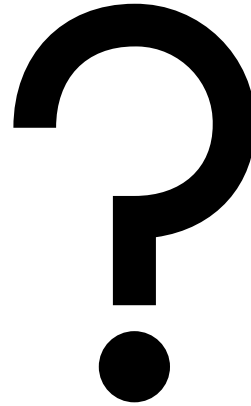
- Kanata North
- (2) Subdivisions with wetland removal
- Slope Hazards & unauthorized development
- (2) Pit/Quarry applications in LH

New Mapping

- New Lidar imagery covering entire watershed
- New flood plain mapping along Clyde River



Questions



Thank you!

Diane Reid

dreid@mvc.on.ca

Mercedes Liedtke

mliedtke@mvc.on.ca



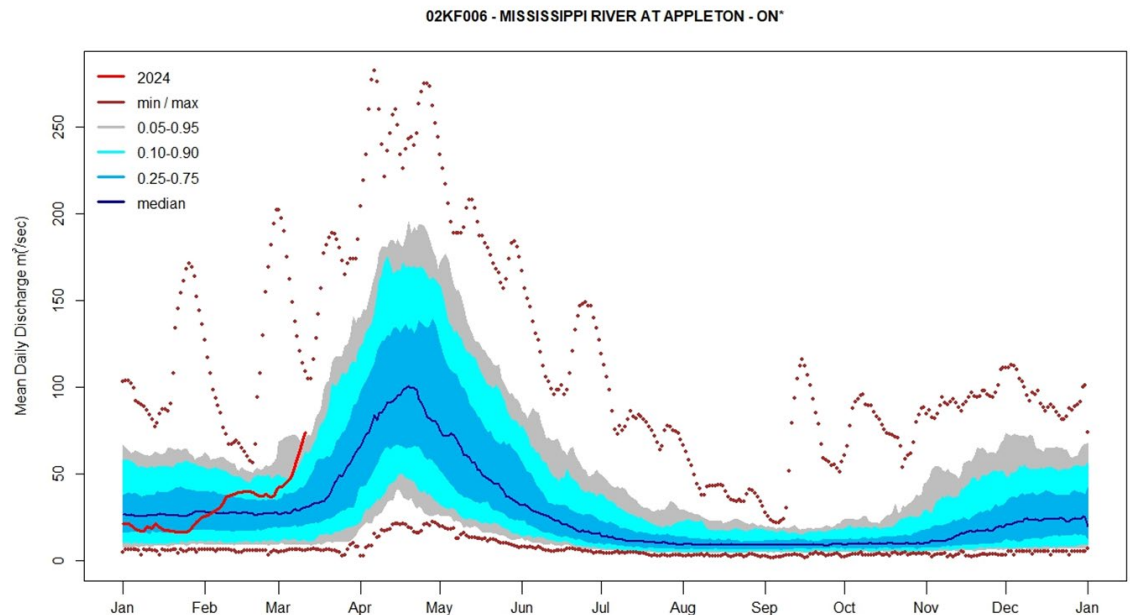
Watershed Conditions Report

Board of Directors

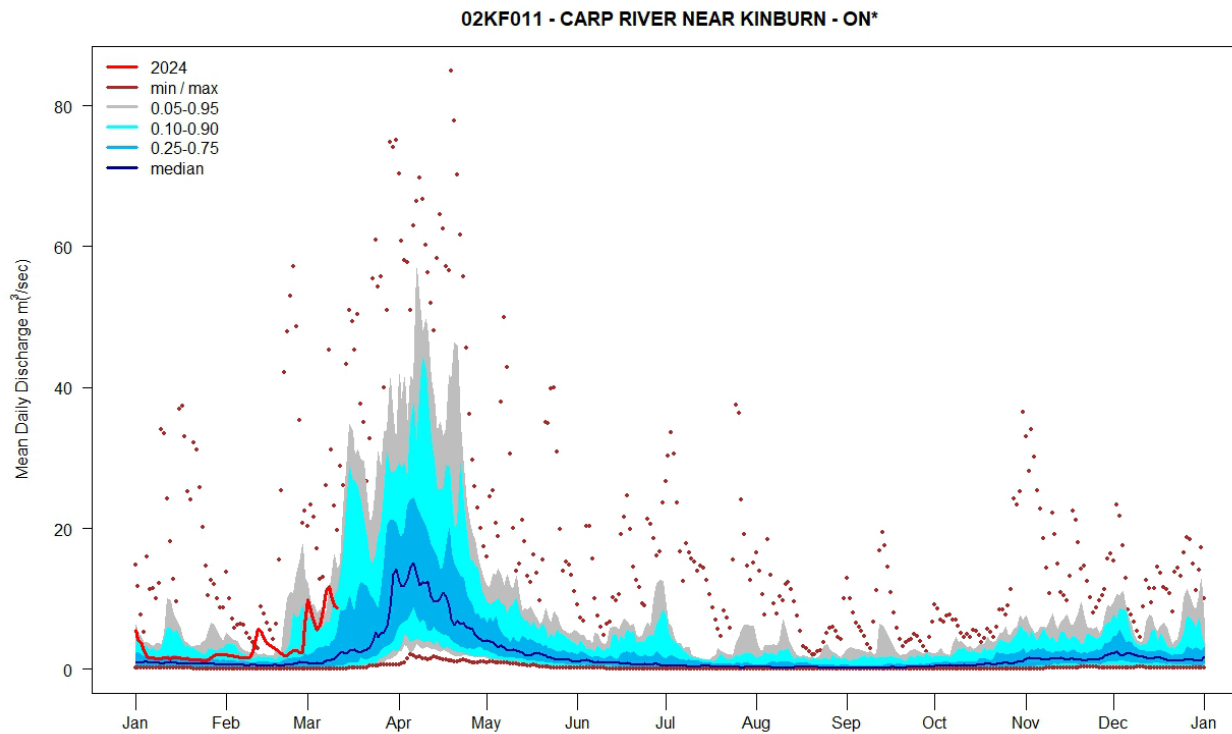
March 11, 2024

Current Conditions

- Flows across the watershed are above normal for this time of year due to the early freshet.
- The current operating objective is capture all precipitation for the next two months.



Current Conditions



Snow Conditions

- Snow pack conditions as of March 1st was 50% below normal /average.
- With the majority of the snow now gone throughout the watershed, increased flows are not expected unless we receive significant rainfall

Snow Course	Snow Depth (cm)	WE (mm)	Density
Ardoch	5	13	26%
Bon Echo Park	26	107	41%
Mackavoy Lake	17	80	47%
Buckshot Lake	21	111	52%
Canonto Lake	3	12	40%
Lavant	6	29	48%
Gordon Rapids	6	24	40%
Brightside	10	47	47%
Fallbrook	8	38	47%
Snow Road	1	8	80%
Maberley	17	96	56%
Innisville	0	0	0%
Kinburn	3	27	90%
Blakeney	7	52	74%
Stittsville	0	0	0%
High Falls	9	42	46%

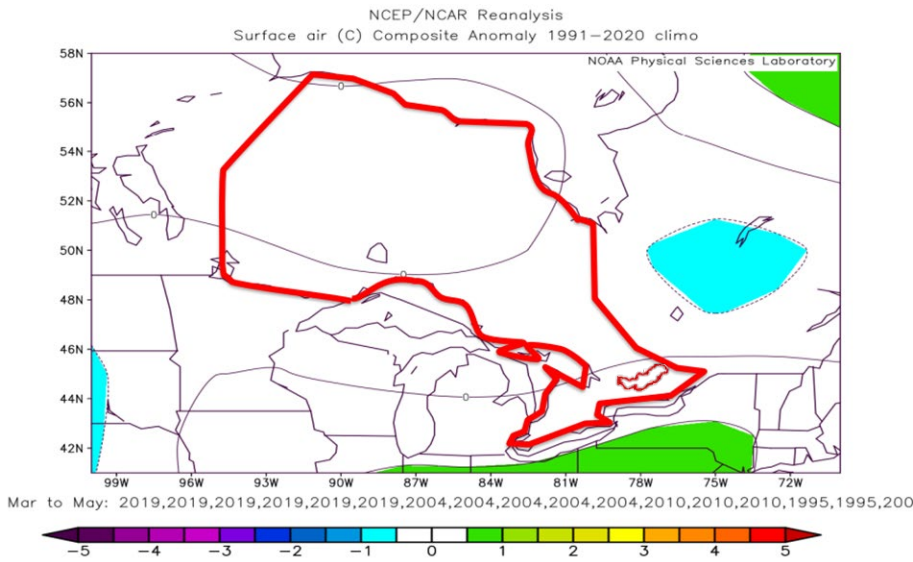
Flood Outlook

- Based on the current conditions, the watershed is expected to;
 - an earlier, drawn out Freshet.
 - have a lower than normal spring peak.
 - May have issues filling lakes if we don't get enough rain in the coming months.

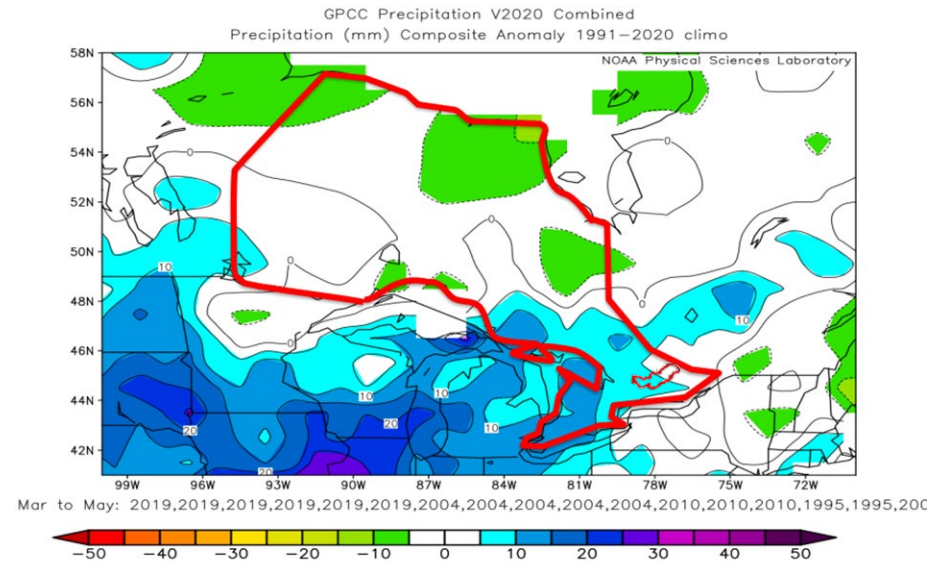


Long Range Forecast

Spring 2023/24 Temperatures from Normal



Spring 2023/24 Precipitation from Normal



Mississippi Valley C.A.

Land Inventory

- Requirement of *O. Reg. 686/21* under the *CAAct*
- Land assets categorized as follows:
 - MVCA HQ
 - Conservation Areas and Trails
 - Vacant Properties
 - Water and Erosion Control Infrastructure (WECI)
 - System Monitoring Sites

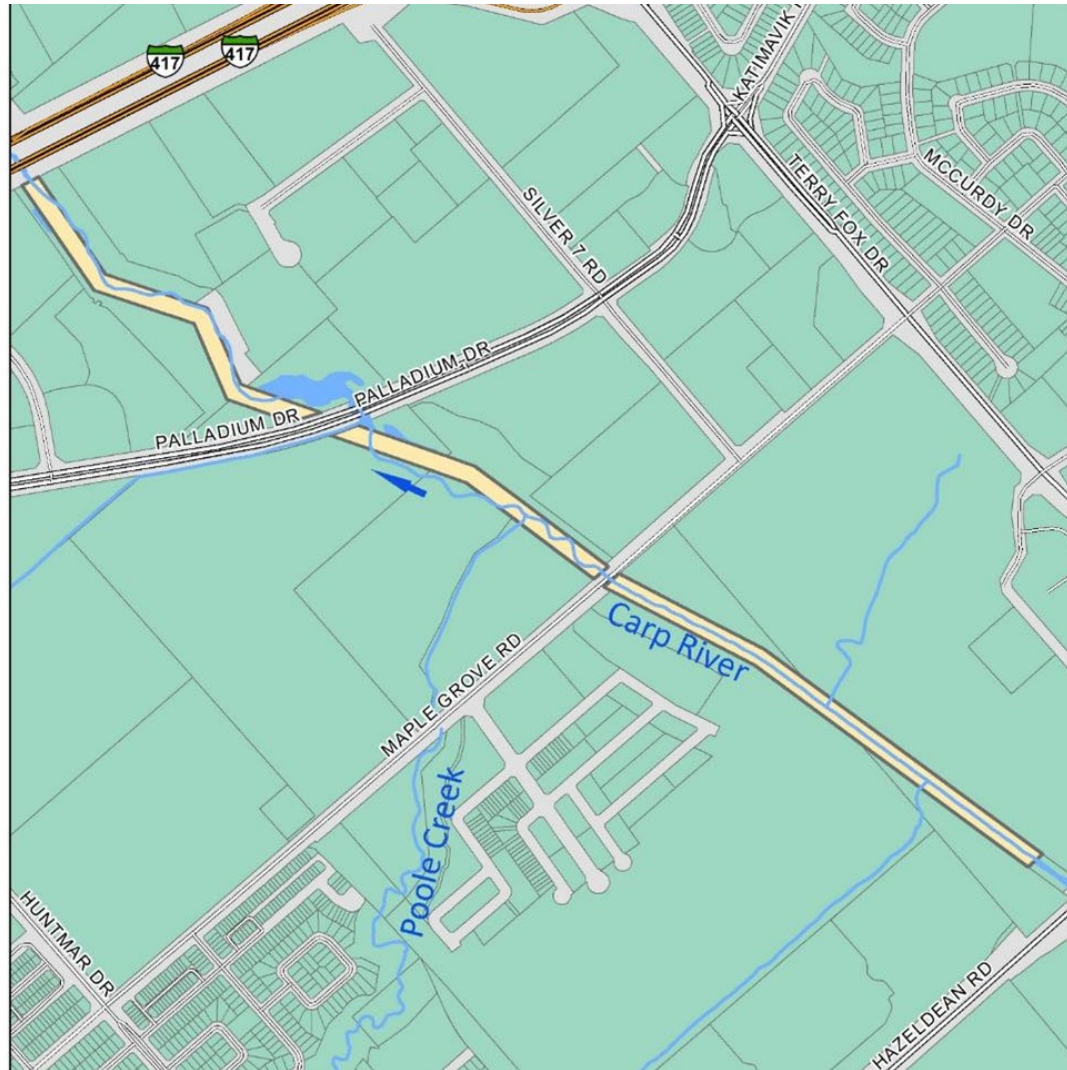
Land Inventory

- Findings
 - Most documents on file, but not in easily accessible formats
 - Conflicting land ownership information at some dams.
 - Lack of easements at most dams and some monitoring gauges.
 - Lack of clear management objectives for shoreline parcels acquired in the late 1980s, early 1990s.
 - Uncertainty regarding MVCA's stewardship obligations at some sites.
 - Need for digitization and proper file management of ownership, easement, and related agreements.
 - Need to develop a strategy to prioritize and address the above

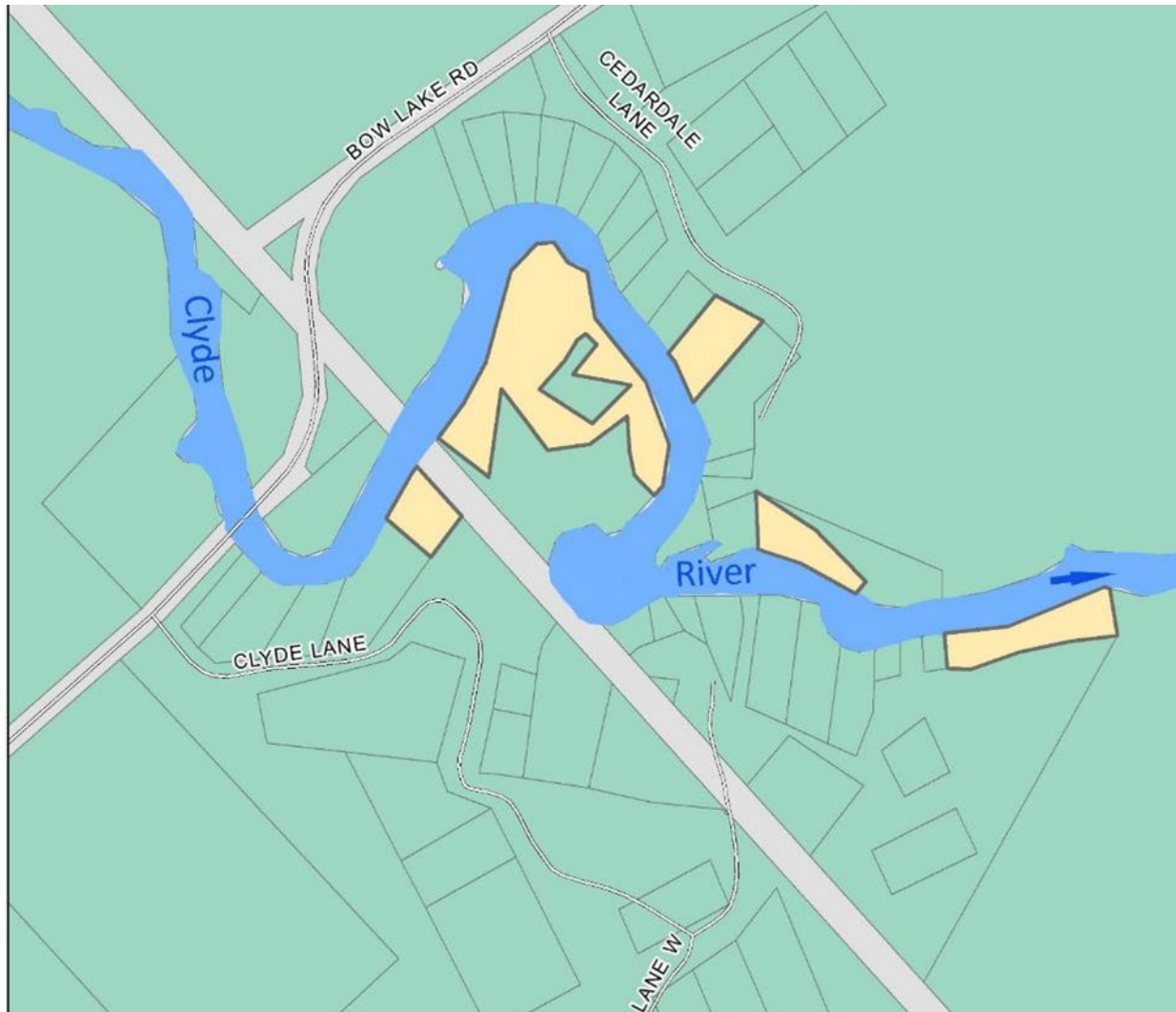
Land Inventory

- Next Steps
 - Elevate land inventory issues during development of the:
 - Land Conservation Strategy
 - Watershed-based Resource Management Strategy
 - Prioritize and address data gaps and agreements
 - Complete tables as information allows by December 31, 2024

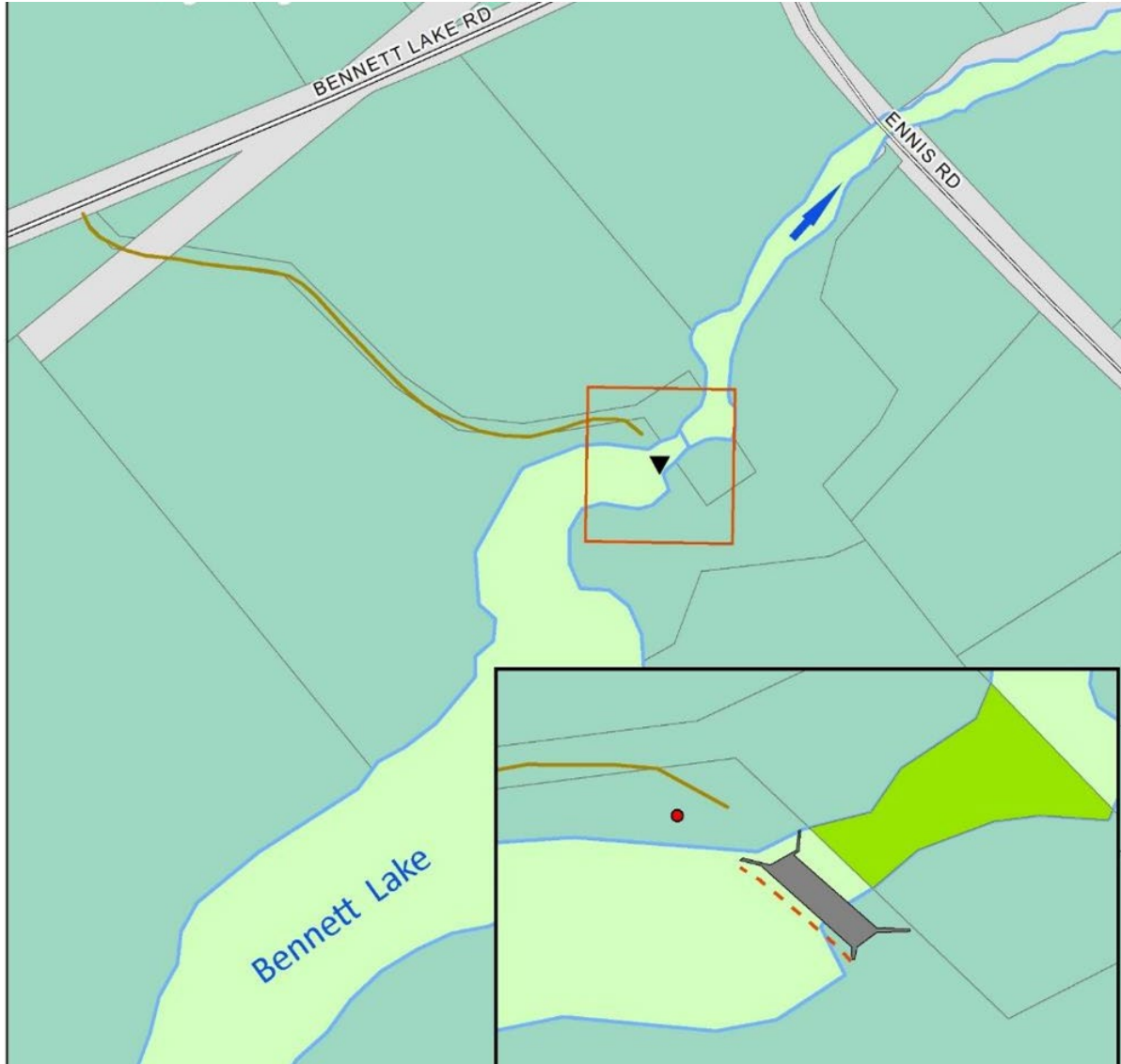
Land Inventory - ownership



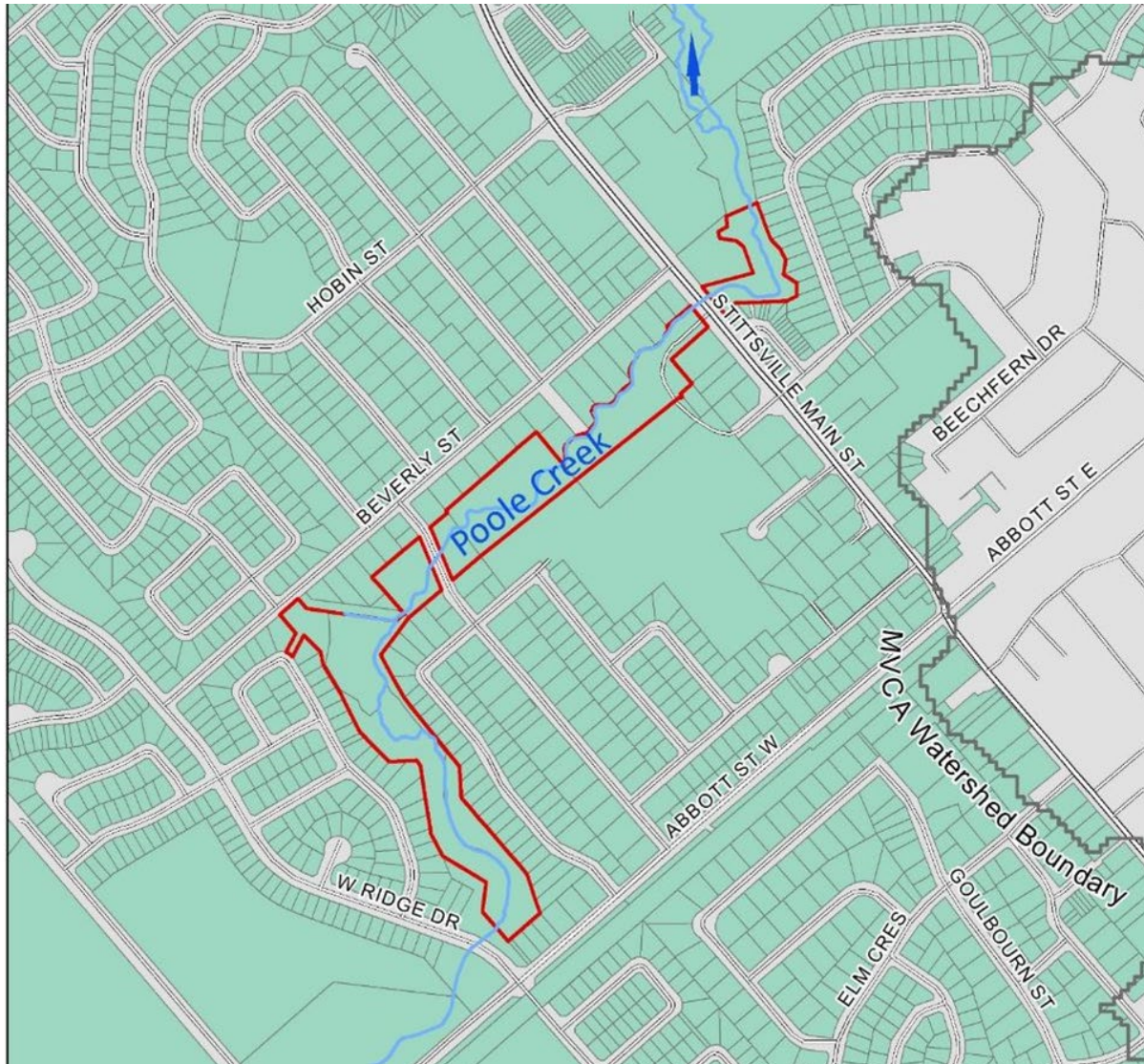
Land Inventory - ownership



Land Inventory – ownership / easements



Examples - stewardship



CA Act & Regulatory Changes

- Changes to *Conservation Authorities Act*
 - Bill 229 - Protect, Support and Recover from COVID-19 Act
 - Bill 23 - More Homes Built Faster Act
 - Moved several items into the regulation
- O. Reg. 41/24
 - amends permitting powers and processes under Section 28 of the Act, and takes effect April 1, 2024.
- O. Reg. 42/24
 - amends the scope of CA mandatory programs and services, and came into effect February 16, 2024.
- O. Reg. 688/21
 - provides common rules across all CA jurisdictions

O. Reg 41/24: Key Changes

- Change definition of “watercourse”
- Removes permitting related to:
 - Pollution
 - Conservation of Land
- Limits permitting conditions to those that:
 - mitigate negative impacts on the control of natural hazards or public safety risks arising from natural hazards, or
 - support the administration or implementation of the permit (e.g. related to reporting or compliance.)
- Reduces setbacks around PSWs
- Introduces mandatory pre-consultation
- Imposes review timelines
- Provides for administrative review of submission requirements (Regulations Committee)



Policy Update:

MVCA Board of Directors

March 11, 2024

Changes

- Removal of “pollution and conservation of land”, Addition of “unstable soil or bedrock” and “health or safety of persons or damage or destruction of property.”
- Change in definition of “watercourse” from any identifiable depression to a defined channel with a bed and banks/sides;
- Removal of “Other Areas” Provincially Significant Wetlands 120 to 30 metre regulated area around the wetland.

Exemptions

- A seasonal or floating dock 10 square metres in size or less
- A rail, chain-link or panelled fence
- Agricultural in-field erosion control structures
- Installation, maintenance, or repair of tile drains
- Installation, maintenance, or repair of a pond for watering livestock
- Maintenance or repair of a driveway or private lane

- A non-habitable accessory building or structure 15 square metres
- An unenclosed detached deck or patio that is 15 square metres

- Maintenance or repair of municipal drains
- Reconstruction of a garage that does not exceed the same footprint



Regulations Officer Appointments:

MVCA Board of Directors

March 2024

Changes

- On April 1, 2024, Part VII Enforcement and Offences of the *Conservation Authorities Act* will be proclaimed, resulting in a need to re-appoint all existing Conservation Authority Provincial Offences Officers and any new officers consistent with the updated legislation.
- **Stop Work Orders**
- Specific wording has been changed with regards to officer entry without a warrant.
- Penalties have been increased for individuals to \$50,000 increased for corporations to \$1,000,000 max



Regulations Update: Wetland Offsetting

MVCA Board of Directors

March 2024

Considerations

- No formal process or requirements at MVCA
- Increased demand for development on constrained lands
- Established practice in other areas of province
- Changes in legislation
- Changes to OWES

MVCA Wetland Regulation History

- 2004 – Province required Conservation Authorities (CAs) to amend their regulations to include wetlands, areas within 120 meters of PSWs, and areas within 30 meters of other wetlands.
- 2006 – BOD decision regulate PSW's only – mapping, resources, staff
- 2013 – Policy updated for PSW's (permitted uses)
- 2017 – MVCA expands the implementation of regulation
all wetlands that are greater than 0.5 hectares and that are hydrologically connected to another surface water feature
Area of regulated wetland doubles
- 2019 – 2023 – updates to access, boardwalks, MZO

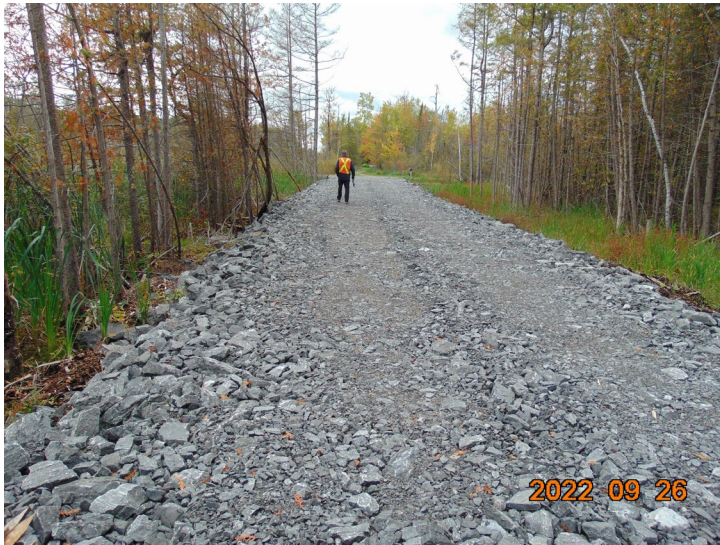
Permitted Uses in Wetlands

- A single dwelling and accessory building are permitted on an existing vacant lot of record within a wetland (non PSW)- EIS required
- Boardwalks may be permitted within a regulated wetland
- Constructed access through a regulated area may be permitted for a Lot of Record (non PSW) EIS may be required
- Infrastructure, maintenance, recreation and conservation, flood control works (all wetlands)

Background con't

- Offsetting policies 2011
- Enforcement – remediation 1:1
- Lessons learned from previous approvals
- Location - Catchment and sub-watershed
- Planning Act establishes development in principle
- CA does not support/facilitate new Planning Act applications - development in wetlands
- Typically applied to lots of record, infrastructure, access
- Protection First - Offsetting should not become the default
- Monitoring and success

Examples



Examples con't



Mitigation Hierarchy



Key Objective – replace lost functions* with a goal of a net environmental gain.

Offsetting Ratio

- Wetland 2:1
- Adjacent lands 1:1

Ecological Offsetting Plans

- Technical Studies
- Qualified professional
- Mitigation Hierarchy
- Costs – applicant
- Scope – scale, existing infrastructure
- Compensation - Reserve
- Monitoring

Feedback

- Role of MVCA's Regulations Committee and hearings,
- Post construction monitoring,
- Review requirements for municipalities,
- Administration of monetary compensation,
- Offsetting and role of stormwater management ponds,
- Achieving net environmental gain,
- Changes to the *Ontario Wetland Evaluation System (OWES)*,
- Works undertaken pursuant to the *Drainage Act*.

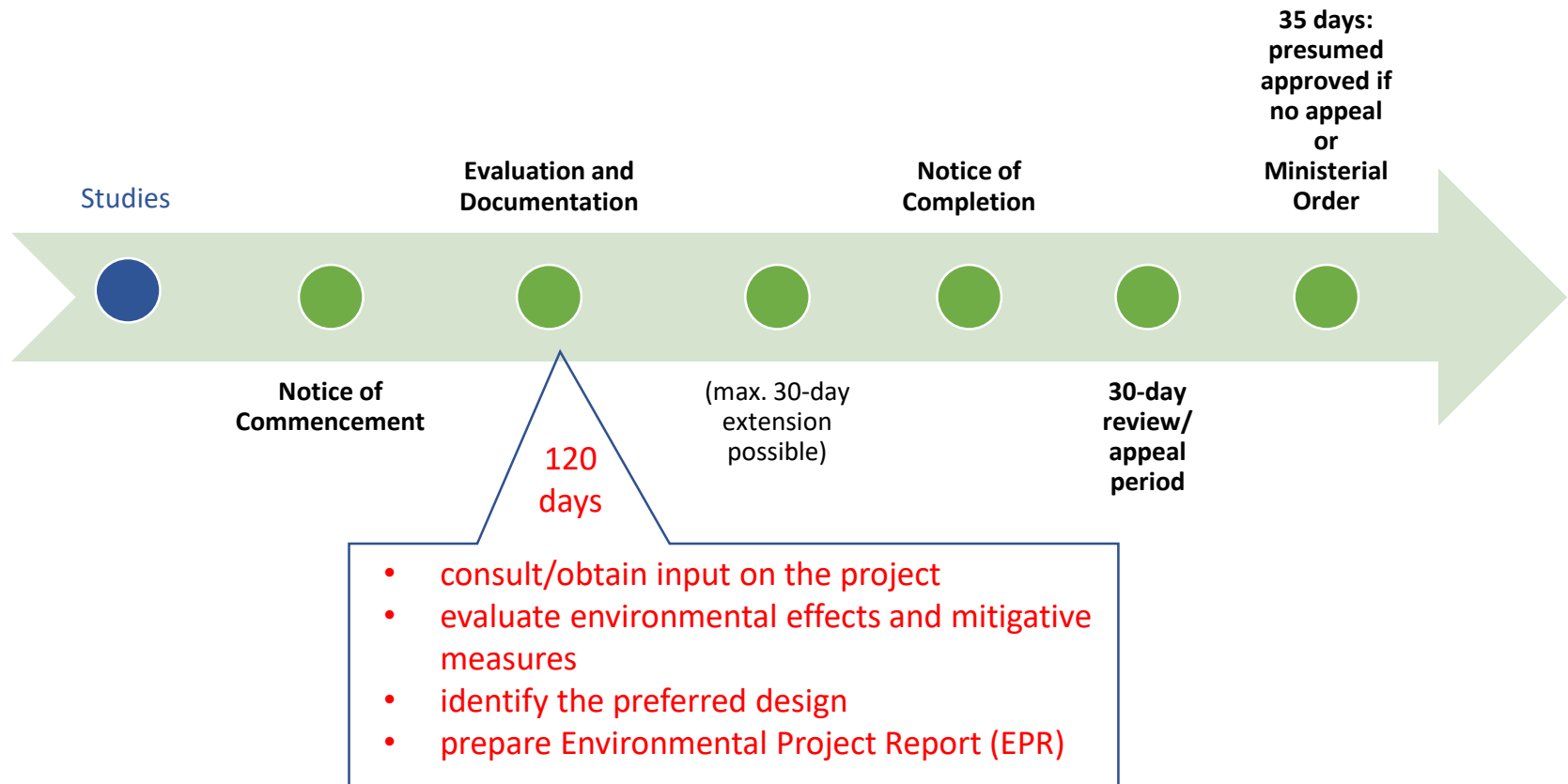
Thank you

Questions?

New EA Proposal

- Proposes new Municipal Project Assessment Process (MPAP)
- Would revoke:
 - Municipal Class Environmental Assessment (MCEA) process
 - Private Sector Developers Regulation (O. Reg. 345/93)
- Removes all existing Schedule B (*and other?*) projects from requiring completion of a project assessment.
- Removes project assessment requirements for private sector projects providing similar infrastructure to residents.
- Introduces a new “streamlined” (120-150 day) process
- CAs still maintain the ability to review and comment on matters related to natural hazards under O. Reg. 686/21
 - s. 6(2) mandatory review of documents under the *EA Act*
 - s. 13(3) drinking water source protection
- Does not change obligations under the *Environmental Protection Act*

“Streamlined” Municipal EA process



Budget Control Report

Table 1: Operations Budget

Budget Item	2022 Actual	2023 Budget	December 31, 2023 Unaudited Actual	Variance
Expenditures				
Corporate Services	\$795,489	\$1,108,512	\$1,021,514	(8%)
Watershed Management	\$1,709,050	\$2,100,573	\$2,102,247	0%
Flood and Erosion Control	\$751,106	\$508,166	\$467,554	(8%)
Conservation Services	\$700,317	\$416,511	\$543,831	31%
Category 2 Programs		\$0	\$104,130	
Category 3 Programs		\$391,199	\$331,370	(15%)
Total Operating	\$3,955,961	\$4,524,962	\$4,570,646	1%
Revenues				
Municipal Levy	\$2,840,876	\$2,962,450	\$2,962,450	0%
Reserve Funds	\$128,436	\$336,191	\$72,920	(78%)
Provincial & Federal Grants	\$200,666	\$367,216	\$511,469	39%
Fees for Service	\$554,276	\$715,884	\$807,230	13%
Other Revenue	\$114,123	\$143,221	\$216,577	51%
Total Revenues	\$3,955,961	\$4,524,962	\$4,570,646	1%