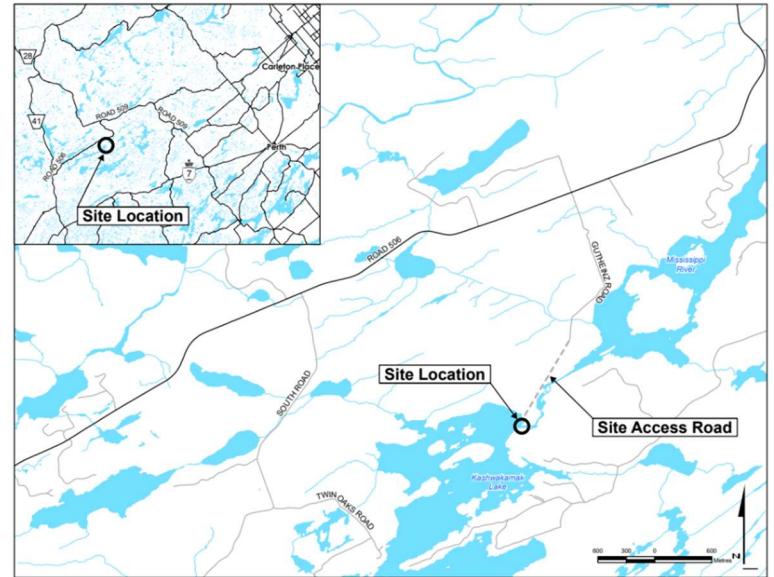


The Mississippi Valley Conservation Authority (MVCA) has retained McIntosh Perry Consulting Engineers Ltd. (McIntosh Perry) to complete a Class Environmental Assessment (Class EA) for the Kashwakamak Lake Dam located in the Township of North Frontenac on the main channel of the Mississippi River. The Kashwakamak Lake Dam was built more than 100 years ago and is reaching the end of its useful lifespan. The deteriorating condition of the dam necessitates that a decision be made on whether to decommission, rehabilitate or replace the existing dam within the next five years.

The study team invites you to participate in the study, which is being completed in accordance with the Conservation Ontario's Class Environmental Assessment for Remedial Flood and Erosion Control Projects. The Class EA process includes public, governing agency, stakeholders and Indigenous Communities consultation, characterization of the study area and the identification and evaluation of alternatives using sound criteria to select the technically preferred alternative. This study will investigate the potential environmental, social and economic impacts of the preferred alternative and identify measures to mitigate any adverse impacts.



Input received will be incorporated into the planning and design process for this project and will be received until **June 23rd, 2023**. If you wish to be involved in this study or receive information, please contact one of the project representatives identified below. Additional consultation opportunities will be made available as the study progresses. Subject to comments received and the receipt of necessary approvals, MVCA intends to proceed with the planning and design as defined in the Class Environmental Assessment process. For further details pertaining to the Kashwakamak Lake Dam and Class EA, please visit the MVCA website: <https://mvc.on.ca/current-initiatives/kash-class-ea/>.

For further information on this project please contact the following:

Juraj Cunderlik, PhD., P.Eng.
Director, Engineering
Mississippi Valley Conservation Authority
10970 Highway 7
Carleton Place, ON, K7C 3P1
Phone: 613-253-0006 Ext. 233
jcunderlik@mvc.on.ca

Lisa Marshall, P.Eng.,
Project Manager
McIntosh Perry Consulting Engineers Ltd.
115 Walgreen Road, R.R.3
Carp, Ontario, KOA 1L0
Phone: 613-714-0815
l.marshall@mcintoshperry.com

Comments submitted to the MVCA for the purpose of providing feedback regarding this Class Environmental Assessment are collected under the authority of the Environmental Assessment Act. Information will be collected in accordance with the Freedom of Information and Protection of Privacy Act. With the exception of personal information, all comments will become part of the public record.

This notice issued **May 25th and June 1st, 2023**